

# Safety Alert

**Number:** 24-02

**Published:** 25/03/2024

**Subject:** Side Scuttle Knocked in by Wave Impact

## What Happened / Narrative

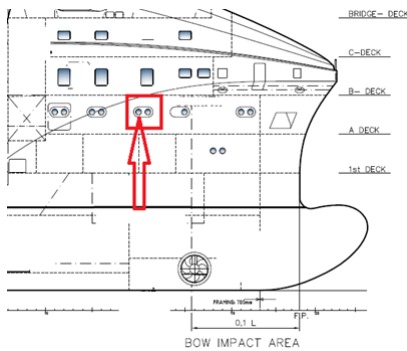
A Platform Supply Vessel side scuttle was knocked in from wave impact during transit in heavy seas.

- Vessel heading 138° at approximately 5-6 knots.
- Wind direction Southerly force 8 and sea from South rough condition.
- Forecast observations for the area around time of impact: Hs 5m, Hmax 8m, Swell 3,5 m and Swell direction 197°.
- Side scuttle serving crew cabin on A deck 11.7 m above baseline and vessel draught 6 meter. Side scuttle freeboard approximately 7 meters.
- Frame holding glass in place with 22 brass screws.
- Hinged storm cover/deadlight was not closed at time of impact.
- On investigation all 22 brass screws on the frame appeared to have broken simultaneously.
- Glass pane did not break but hit opposite wall and door frame of the cabin.
- No personnel injuries and minor material damage.

## Experience Transfer / Learning

- Hinged covers indicate that rapid and frequent operation is relevant.
- Storm covers/deadlights in lower part of bow sections to be kept closed at sea during bad weather.
- Suitable marking to be made on relevant side scuttles/portholes/port lights and even windows if applicable.

## Photographs / Supporting Information



*The information contained within this Safety Alert and the associated MSF web site is provided in good faith for the benefit of our members and does not constitute and is not intended to constitute professional advice or any form of formal representation on behalf of any MSF member or officer. The text as provided by submitting organisations may be amended to ensure that it is brief, informative and readable but will as far as reasonably practicable remain as per the intent of the original submission. For the avoidance of doubt, no liability whatsoever shall be attached to any guidance, recommendation or statement contained therein. Contents should be reviewed individually by recipients who will determine relevance to their own operations.*